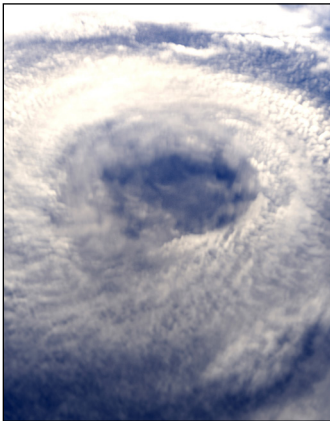


You can help create the next Pinellas County all-hazards plan



The Pinellas County **Local Mitigation Strategy (LMS)** is a multi-jurisdictional all-hazards plan. Its purpose is to assess our community's risk from natural and manmade disasters and identify projects that will reduce loss of life and property. Having this plan in place makes local governments, businesses, non-profits and residents in the county eligible to apply for federal hazard mitigation grant funding. The LMS also serves as the county's floodplain management plan and earns credit under the Community Rating System (CRS) program, which provides flood insurance premium discounts to each participating jurisdiction.

The Federal Emergency Management Agency (FEMA) requires the entire plan to be updated every five years. The Florida Division of Emergency Management and the CRS require certain sections to be updated annually, including the planned mitigation projects.

The LMS takes a whole-community approach by bringing public and private partners together to update the plan. County and municipal governments, other governmental agencies, local universities, businesses, non-profits and residents are all encouraged to contribute.

This year we are forming an LMS Stakeholder Working Group to help with our next FEMA update. If you live or work in the County or one of its municipalities and would like to participate in this effort, please contact:

Chris Moore at cdmoore@pinellascounty.org
or (727) 464-8219

Members of the LMS Stakeholder Working Group will be tasked with providing input on the plan update and attending three meetings per year.

To find out more about the LMS, please visit PinellasLMS.org.

